



SHAWNEE PRESERVATION SOCIETY

# SPS News & Notes

Fall 2008

Volume 1, Issue 1

## Editorial Staff:

Editor-

Ray Ostfeld

Staff-

Jeanne Ostfeld  
Mary Ellen Higgins  
Holly Cadwallader  
Martha Carbone

## Stories wanted:

Interested in writing an article of local interest or importance? Contact us!

Shawnee Preservation Society: [www.shawneepreservationsociety.com](http://www.shawneepreservationsociety.com)  
Email Articles and Ideas to: [info@shawneepreservationsociety.com](mailto:info@shawneepreservationsociety.com)

## Inaugural Newsletter Published

We hope you enjoy this first edition of the *SPS News & Notes*. SPS will be publishing this quarterly newsletter to inform SPS members, neighbors, and friends about the activities of the organization. We will also attempt to keep you informed on issues impacting the local and regional community.

We have a small but extremely dedicated group of volunteers who are working to make this happen for SPS. To those people working hard behind the scenes, thank you for all you do for SPS and the community.

*SPS News & Notes* is a work in progress. We need your feedback to tailor the publication to your needs. Please send us your comments telling us what you liked or did not like, what we are missing, etc. You can reach us at [info@shawneepreservationsociety.com](mailto:info@shawneepreservationsociety.com) or (570) 236-1321.

Field reporters needed! If you have a story on local history, environmental concerns, or any item of local interest, consider submitting it for an upcoming newsletter. We welcome your contributions.

**Shawnee**

**Preservation  
Society**

**Post Office Box 517  
Shawnee On Delaware,  
Pennsylvania 18356**

**Contact us:**

**(570) 236-1321 or**

**[info@shawneepreservationsociety.com](mailto:info@shawneepreservationsociety.com)**

## Annual Membership Meeting Held August 4th

The Annual membership Meeting was held on August 4<sup>th</sup> at Worthington Hall. We conducted elections of officers for the upcoming year, annual reports from the officers and subcommittees were presented, and questions from the floor were addressed. Below are excerpts from some of the reports.

### President's Report-

SPS had a wonderful year. We were involved with several community events that provided fun and education to the residents who attended. We continue to partner with other environmental organizations to work for the preservation of the natural and historic resources in our area. SPS is still involved in litigation regarding the

ShawneeValley PRD. Recent preliminary negotiation talks with the developer have stalled. Our challenge to the 2007 amended PRD is scheduled to be heard at the Monroe County Courthouse on September 24<sup>th</sup> at 9:45 am. Anyone may attend. Attorney Don Miles is representing SPS in this matter.

### Subcommittee Reports-

Historical- We continue to work for preserving the history and culture of the Shawnee Hollow area of Smithfield Township. Much work still needs to be done. If you have an interest in history, artifacts, or a story to share, let us know.

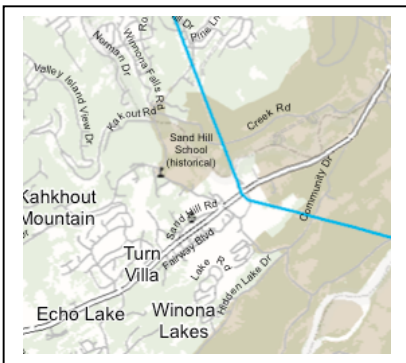
*Story continues on back page.....*



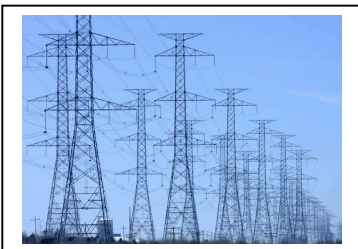
### *What is SPS's Purpose?*

*The purpose of the Shawnee Preservation Society is to encourage awareness of the long-term impact of residential and commercial development.*

*We advocate for balanced growth, natural resources conservation, heritage preservation and resolution to infrastructure issues in Shawnee On Delaware and surrounding areas.*



Route B through the National Park



## **Don't Forget to Renew Your Membership!**

Please consider renewing your membership or making a contribution. Memberships that were paid prior to last year's Annual Membership meeting in August of 2007 are now expired.

We need your active participation and financial support to keep this work going. Your input, questions, and comments are always welcome. Feel free to contact SPS by email, regular mail, or phone.

Members automatically receive our email announcements provided they have listed an email address. Nonmembers may receive these announcements by sending their email address to [info@shawneepreservationsociety.com](mailto:info@shawneepreservationsociety.com).

If you do not have email, selected announcements can be mailed to you. Send a note to us at: SPS PO Box 517, Shawnee On Delaware, PA 18356.

## **Shawnee Preservation Society: Mission Statement**

The Shawnee Preservation Society (SPS) is an incorporated, not-for-profit, voluntary group of concerned citizens, seeking to preserve, protect and improve the natural beauty, historic features and quality of life in Shawnee On Delaware, Pennsylvania and the surrounding areas of Smithfield and Middle Smithfield Townships, by balancing growth with the preservation of a sustainable community for future generations.

## **NIETC Route B Chosen: Line through Bushkill & NPS**

In 2005, amendments to the Energy Policy Act (EPA) provided utility companies with unprecedented leverage to influence the course of state and national policies. There are a number of transmission corridors planned nationwide. Fifty-two counties in Pennsylvania will carry these high voltage transmission lines.

One of the lines that will supply NJ & NY will pass very close to our area going past Fernwood Resort, through the Delaware Water Gap National Recreation Area & crossing over the Delaware River. A huge chain of ugly towers will be built across the state essentially stringing a power cord across the state from the plants which generate cheap power and transporting it to the high demand markets where it will be sold at a premium.

By using the powers of "eminent domain", land will be taken from private property, damage natural landscapes and historical areas, etc.

The power generated will largely be utilized by out-of-state customers. Customers in New Jersey, Maryland and Pennsylvania will pay for the project through surcharges on their utility bills.

Many groups oppose this plan and counter that this project is not needed. Instead, they argue for the outdated power grid to be updated. Power companies have got the project rolling by calling it a matter of homeland security.

Our PA Senator Casey has started a petition opposing the project—sign it on his website: <http://casey.senate.gov/>. Stay informed on this important issue.

Check these resources for more info:

[www.pplreliablepower.com](http://www.pplreliablepower.com)

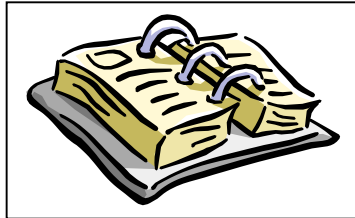
[www.dropthelines.com](http://www.dropthelines.com)

[www.stopthetowers.org](http://www.stopthetowers.org)

note "Transmission Grid Truth"

[www.pennsylvania.sierraclub.org](http://www.pennsylvania.sierraclub.org)

## SPS Event Calendar....



### September 2008-

- ▶ Saturday Sept. 13-  
SPS at United Way Garage Sale  
9 am to 3 pm in Courthouse Square  
Downtown Stroudsburg
- ▶ Saturday Sept. 13-  
Streamside Buffers lecture sponsored  
by Shawnee Creek Watershed  
Conservancy. 10 am to noon, free.  
Beers Lecture Hall, ESU campus
- ▶ Sunday Sept. 14-  
SPS at Green Fair, Noon to 5 pm.  
Shawnee Inn, free.
- ▶ Wednesday Sept. 24-  
Hearing of SPS lawsuit at Monroe  
County Courthouse, 9:45 am.
- ▶ Sunday Sept. 28-  
First Annual Canoe Race on the  
Delaware River, 2 pm launch, \$30  
Picnic to follow. Further details soon.

### October 2008-

- ▶ Saturday Oct. 4-  
SPS at Stroudsburg farmer's Market  
Ann Street
- ▶ Sunday Oct. 5-  
Shockenaw Mountain Boys  
Concert to benefit SPS 2-6pm  
See [www.thehobostage.com](http://www.thehobostage.com)  
Simultaneous web-a-thon

### December 2008-

- ▶ Saturday Dec. 6-  
2<sup>nd</sup> Annual Holiday Celebration  
Village Center, details to come

### Important Voting Dates....

- 10/6-** Last Day to register
- 10/28-** Absentee application deadline
- 10/31-** Absentee ballots due in the elections office
- 11/4-** Election day, polls open 7 am to 8 pm

### Any questions or problems, call:

Monroe County Elections Office (570) 517-3165

Common Cause voting problems hotline 1-866-OUR-VOTE

## Membership Form (tear off and send in)

Name \_\_\_\_\_ Phone \_\_\_\_\_

Address \_\_\_\_\_

City & State \_\_\_\_\_ Zip \_\_\_\_\_

Email \_\_\_\_\_ Willing to Volunteer?    Y    N

Basic Annual Membership dues are \$15, select your level:

\_\_\_ \$15    \_\_\_ \$25    \_\_\_ \$50    \_\_\_ \$100    Other \$ \_\_\_\_\_

Return to: SPS, PO Box 517, Shawnee On Delaware, PA 18356

## Shawnee Preservation Society

Post Office Box 517  
Shawnee On Delaware, PA  
18356

E-MAIL:  
info@  
shawneepreservationsociety.com

### We're on the Web!

See us at:  
www.  
shawneepreservationsociety  
.com

## Canoe Race to Begin Fall Season of SPS Events

Join us on Sunday, September 28<sup>th</sup> for some friendly rivalry as we canoe down the federally-designated "Wild and Scenic" Delaware River. Prizes awarded to the first-place and second-place contestants. First -place chooses between a limited edition Gwendolyn Evans print, "Shawnee Christmas Past and Future" or a gift certificate to the Private Table restaurant on Route 209 north of Marshall's Creek.

Sponsor a canoe and have your name/business appear on a banner on a canoe. Your gift will also be acknowledged on the SPS website.

Interested canoeists should send their \$30 entry fee, name, address, phone number, the names of the other people in your canoe to: SPS, PO Box 517, Shawnee On Delaware, PA 18356



### Continued from Front Page

Watershed- Shawnee Creek was included as part of the annual Monroe County Water Quality Study for the first time in over ten years. The site which was tested produced some of the finest waters IN THE COUNTY. Shawnee Creek Watershed members continue to monitor and test the creek throughout the year.

**Volunteers are needed!** If you have and interest in the environment, local history, watershed protection, or our community events, contact us to join in our efforts.

### SHAWNEE PRESERVATION SOCIETY

Post Office Box 517  
Shawnee On Delaware, PA  
18356

